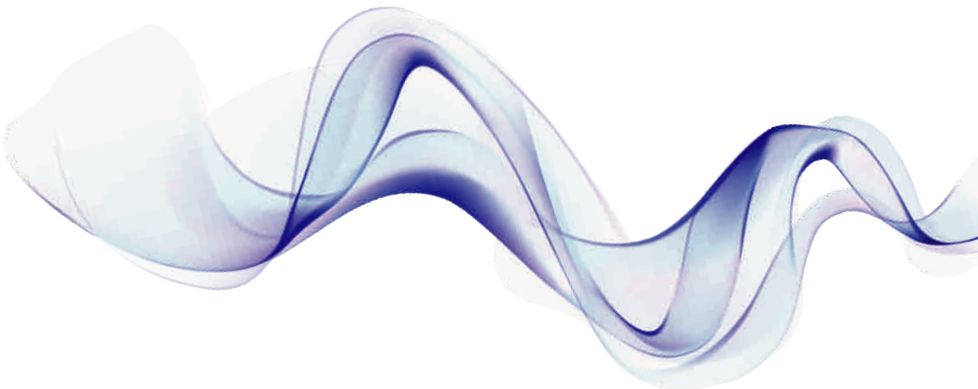




# M850 Vet

Handheld Veterinary Monitor



**Physical Specifications**

Mainframe weight: <350g (full configuration, including the batteries).  
Mainframe size: 142mm(W)×78mm(H)×36mm(D)

**Environmental Specifications**

Temperature: Operating: 5℃ to +40℃  
Storage: -20℃ to +55℃  
Atmospheric: Operating: 860hPa to 1060hPa  
pressure Storage: 500hPa to 1060hPa  
Humidity: Operating: 15% to 85%(non condensing)  
Storage: less than 93%(non condensing)

**Charging Specifications**

Power Adapter:  
Micro USB: Charge, Data export  
Power adapter: Input: AC 100~240V  
Output: DC 5V/2A.

Battery Requirement:  
Type: Built-in lithium battery  
Voltage: 3.7V  
Capacity: 4800mAH  
Charging time: 3~4h  
Run time: >28h

**Battery Requirement**

Type: Built-in lithium battery  
Voltage: 3.7V  
capacity: 4800mAH  
Charging time: 3~4h  
Run time: >28h

**Display**

Size: 4.3inch  
Resolution: 480\*272  
Touch: Resistive touch  
Autorotation Direction: four directions

**Indicating Lamp**

Alarm indicating: 1(Yellow/Red), on the top of screen.  
Battery charging: 1 (orange)  
indicating lamp: When charged, it lights orange.  
When fully charged or not charged, it doesn't light.

**Buttons**

Power button: Turn on/off  
Freeze/Unfreeze ECG waveform  
Shortcut key: Short press to achieve the above function,  
long press + power button to achieve  
calibration of LCD.

**Data Storage**

Animal ID: 1~96  
SpO2 trend interval: 0s, 30s, 1min, 2min, 5min, 10min  
Capacity : 500 groups/animal can be stored (only data, no waveform)

**ECG**

Lead type: 3-lead, 5-lead  
ECG input rang: ±6mV  
Input impedance: ≥5.0MΩ  
Leakage Current : <10 uA  
Frequency response: 0.5—40Hz  
GMRR : ≥89dB  
Electrode offset potential: ±500mV d.c.  
Standardizing signal: 1mV ±5%  
Protection Electric isolation voltage : 4000V at 50/60Hz 60s  
Defibrillator-proof  
Electrode off indicating: with (except RL)  
Scan speed: 6.25 mm/s, 12.5 mm/s, 25 mm/s

**RESP Specifications**

Method: Impedance  
Measuring lead: Lead I(RA-LA), II(RA-LL)optional, II(default)  
Measurement range: 0~150 rpm (The high/low limit can be  
adjusted continuously)  
Resolution: 1 rpm  
Accuracy: ±2 rpm or ±2%

**BLT SpO2**

Measurement range: 0~100%  
Resolution: 1%  
Accuracy: 70~100% : ± 2%  
0~69%: unspecified  
Alarm: Select the high and low alarm limit of SpO2  
Data update period: 13s  
Anti-interference:  
Anti-motion interference  
Anti-electrotome interference  
Resisting low perfusion capacity  
Recovery time of equipment after defibrillation: 5s  
Pitch Tone: with

**PR**

Measurement range: 25 bpm ~250 bpm  
Resolution: 1 bpm  
accuracy: ±1% or ± 1 bpm, whichever is greater  
Alarm: Select the high and low alarm limit of PR

**Standard Configuration**

ECG, Respiration Rate

**Option**

SpO2, Pulse Rate

